



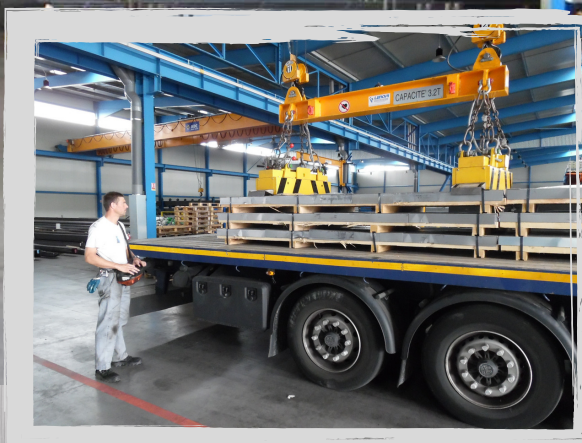
**Clisson
Métal**
GROUPE CLISSON

3200kg



TÔLES ACIER

Programme de stock



Tôles LAMINÉES A CHAUD

ACIER S235

Epaisseur	1,5mm	2mm	3mm	4mm	5mm	6mm	8mm	10mm	12mm	15mm	20mm
Format											
1000 x 2000			✓	✓							
1250 x 2500	✓	✓	✓	✓	✓	✓	✓	✓			
1500 x 3000		✓	✓	✓	✓	✓	✓	✓	✓	✓	✓
1500 x 4000			✓	✓	✓	✓	✓				
2000 x 4000			✓	✓	✓	✓	✓	✓	✓	✓	✓

ACIER S355MC

Epaisseur	3mm	4mm	5mm	6mm	8mm	10mm	12mm	15mm	20mm
Format									
1500 x 3000	✓	✓	✓	✓	✓	✓	✓	✓	✓

ACIER S355J2+N

Epaisseur	6mm	8mm	10mm	15mm	20mm	25mm	30mm	40mm
Format								
1500 x 3000	✓	✓	✓	✓	✓	✓	✓	✓

ACIER S420MC

Epaisseur	3mm	4mm	5mm	6mm	8mm	10mm
Format						
1500 x 3000	✓	✓	✓	✓	✓	✓

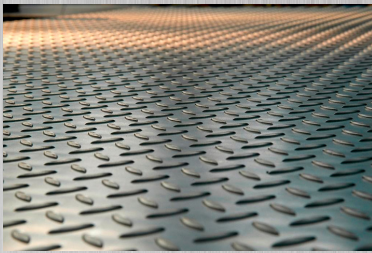
Un hall de 4.500 m²
avec plus de 3.000 tonnes
de tôles disponibles

Tôles DÉCAPÉES ACIER S355MC

Epaisseur	3mm	4mm	5mm	6mm	8mm	10mm	12mm	15mm
Format								
1500 x 3000	✓	✓	✓	✓	✓	✓	✓	✓

Tôles DÉCAPÉES ACIER DD11 et S235

Epaisseur	1,5mm	2mm	2,5mm	3mm	4mm	5mm	6mm	8mm	10mm	12mm	15mm	20mm
Format												
1000 x 2000	✓	✓	✓	✓	✓	✓	✓	✓	✓	✓	✓	
1250 x 2500	✓	✓	✓	✓	✓	✓	✓	✓	✓	✓	✓	
1500 x 3000	✓	✓	✓	✓	✓	✓	✓	✓	✓	✓	✓	✓



Tôles LARMÉES ACIER S235

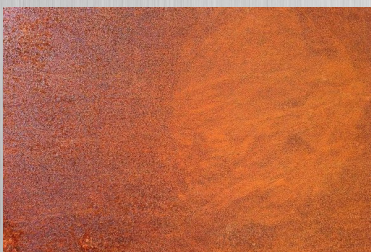
Epaisseur	3/5	4/5	5/7	6/8	8/10	10/12
Format						
1000 x 2000	✓	✓	✓			
1250 x 2500	✓	✓	✓			
1500 x 3000	✓	✓	✓	✓	✓	✓

Tôles GALVANISÉES ACIER Z275

Epaisseur	0,8mm	1mm	1,25mm	1,5mm	2mm	2,5mm	3mm	4mm	5mm
Format									
1000 x 2000	✓	✓	✓	✓	✓	✓	✓	✓	
1250 X 2500	✓	✓	✓	✓	✓	✓	✓		
1500 X 3000	✓	✓	✓	✓	✓	✓	✓	✓	✓
1500 X 4000				✓	✓	✓	✓		

Tôles ELECTROZINGUÉES DC 01 + ZE 25/25

Epaisseur	0,8mm	1mm	1,25mm	1,5mm	2mm	2,5mm	3mm
Format							
1000 x 2000	✓	✓	✓	✓	✓	✓	✓
1250 X 2500	✓	✓	✓	✓	✓	✓	✓
1500 X 3000	✓	✓	✓	✓	✓	✓	✓

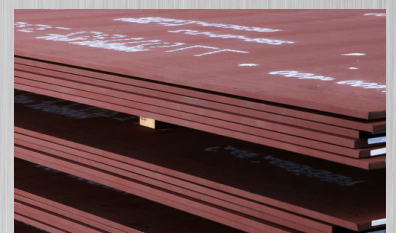


Tôles CORTEN S355JOWP/J2W

Epaisseur	2 mm	3 mm	4 mm	5 mm	6 mm	8 mm	10 mm
Format							
1500 X 3000	✓	✓	✓	✓	✓	✓	✓

Tôles HARDOX 450HB

Epaisseur	3 mm	4 mm	5 mm	6 mm	8 mm	10 mm	12 mm	15mm	20mm
Format									
1500 x 3000	✓	✓	✓	✓	✓	✓	✓	✓	✓



Suivez-nous sur : www.groupe-clisson.fr et sur

